



BUNBURY REGIONAL TRADE TRAINING CENTRE

EATON COMMUNITY COLLEGE SITE

15 SCHOOLS • 3 CAMPUSES • 1 VISION



CERTIFICATE II AUTOMOTIVE STEERING AND SUSPENSION SYSTEM TECHNOLOGY AUR21816 AND CERTIFICATE II AUTOMOTIVE TYRE SERVICING TECHNOLOGY AUR21916



COURSE DESCRIPTION

This dual qualification covers the skills and knowledge related to steering, suspension, exhausts, tyres and rims.

This qualification is typically used to develop workers who are performing vehicle service functions in an automotive environment and would perform a range of mechanical operations involving known routines, methods and procedures.

PRE-REQUISITES

There are no pre-requisites for this course.

WHY CHOOSE THIS COURSE

No matter how much horsepower, torque and 0-100 acceleration a car has, unless the car is safe and the driver can control the vehicle, it is pointless.

This course will teach you how suspension, tyres and steering are all related to vehicle performance, and the importance of vehicle safety. It also teaches you how to service these components yourself, as well as brakes and exhaust systems.

EXAMPLES OF EMPLOYMENT/CAREER OPPORTUNITIES

- Automotive steering and suspension specialist
- Automotive tyre fitter and repairer

PATHWAYS FROM THE QUALIFICATION

Students completing this qualification can pursue employment opportunities in the industry or use the qualification as a stepping stone into further studies at a Certificate III level and higher. Alternatively, additional Certificate II qualifications in the Automotive industry can be explored. Possible apprenticeship in Automotive field or direct employment performing servicing of steering and suspension components/systems of vehicles in an automotive service or repair business.

COST/FEE PAYMENT OPTIONS

Payment options are available.

Site	Fees	Resource fees	Course duration	Days of week	RTO	WPL hours required
ECC	\$2750	Included	1 day / week over 3 terms (includes WPL)	Friday	Cartec Training Solutions	WPL is not compulsory but strongly encouraged. Schools to cover insurance. Student/school to organise work placement.

CERTIFICATE II BUILDING & CONSTRUCTION PATHWAYS 52824WA

COURSE DESCRIPTION

Provides practical skills & insight into the construction industry, particularly in the brick & blocklaying field, and the carpentry & joinery field. This course is delivered over two years and aims to provide students with an insight into a career in the construction industry.

Students can expect to: learn about safe working practices, learn about working effectively in the building industry, gain basic practical hand skills, handle tools and equipment in a safe working environment and effective workplace communication.

PRE-REQUISITES

There are no pre-requisites for this course.

WHY CHOOSE THIS COURSE

Do you like practical learning? Do you want to learn new skills? Are you interested in the construction industry? This could be your first step towards a career in the construction industry.

- Complete your White Card qualification
- Learn about safe work practices
- Aim to become competent in practical skills
- Utilise your knowledge on site during work placement opportunities.

EXAMPLES OF EMPLOYMENT/CAREER OPPORTUNITIES

Completing the course could be your first step towards an apprenticeship within the Carpentry and Joinery or Bricklaying/Blocklaying trades. Get a head start and have industry knowledge before you commence an apprenticeship.

PATHWAYS FROM THE QUALIFICATION

The course contains generic core units such as; work effectively and sustainably in the construction industry; apply OHS requirements; workplace communication; conduct onsite work place learning and more. These generic units can also be relevant to other trade focused areas.

COST/FEE PAYMENT OPTIONS

The course is delivered over two years at \$1,500 per year, per student. A deposit of \$500 will be required to secure a place. Payment options are available.



Site	Fees	Resource fees	Course duration	Days of week	RTO	WPL hours required
ECC	\$1,500 per year	Included	1 day / week over 2 years (plus WPL)	Friday	Skill Hire WA	220 hours in total. School to cover insurance. Student/school to organise work placement. WPL is a TP requirement and must be in the construction industry.



CERTIFICATE II BUILDING & CONSTRUCTION BRICK & BLOCK PATHWAY (CONTINUING STUDENTS) 52443WA



COURSE DESCRIPTION

Provides practical skills & insight into the construction industry, particularly in the brick & blocklaying field. This course is delivered over two years and aims to provide students with an insight into a career in the construction industry.

Students can expect to: learn about safe working practices, learn about working effectively in the building industry, gain basic practical hand skills, handle tools and equipment in a safe working environment and effective workplace communication.

PRE-REQUISITES

Must have completed Certificate II Building and Construction Pathways 1st year

WHY CHOOSE THIS COURSE

Do you like practical learning? Do you want to learn new skills? Are you interested in the construction industry? This could be your first step towards a career in the construction industry.

- Complete your White Card qualification
- Learn about safe work practices
- Aim to become competent in practical skills
- Utilise your knowledge on site during work placement opportunities.

EXAMPLES OF EMPLOYMENT/CAREER OPPORTUNITIES

Completing the course could be your first step towards an apprenticeship within the Bricklaying/Blocklaying trades. Get a head start and have industry knowledge before you commence an apprenticeship.

PATHWAYS FROM THE QUALIFICATION

The course contains generic core units such as; work effectively and sustainably in the construction industry; apply OHS requirements; workplace communication; conduct onsite work place learning and more. These generic units can also be relevant to other trade focused areas.

COST/FEE PAYMENT OPTIONS

The course is delivered over two years at \$1,500 per year, per student. A deposit of \$500 will be required to secure a place. Payment options are available.

Site	Fees	Resource fees	Course duration	Days of week	RTO	WPL hours required
ECC	\$1,500 per year	Included	1 day / week over 2 years (plus WPL)	Thursday	Skill Hire WA	110 hours per year. School to cover insurance. Student/school to organise work placement. WPL is a TP requirement and must be in the construction industry.

CERTIFICATE II BUILDING & CONSTRUCTION CARPENTRY & JOINERY PATHWAY (CONTINUING STUDENTS) 52443WA

COURSE DESCRIPTION

Provides practical skills & insight into the construction industry, particularly in the carpentry & joinery field. This course is delivered over two years and aims to provide students with an insight into a career in the construction industry.

Students can expect to: learn about safe working practices, learn about working effectively in the building industry, gain basic practical hand skills, handle tools and equipment in a safe working environment and effective workplace communication.

PRE-REQUISITES

Must have completed Certificate II Building and Construction Pathways 1st year

WHY CHOOSE THIS COURSE

Do you like practical learning? Do you want to learn new skills? Are you interested in the construction industry? This could be your first step towards a career in the construction industry.

- Complete your White Card qualification
- Learn about safe work practices
- Aim to become competent in practical skills
- Utilise your knowledge on site during work placement opportunities.

EXAMPLES OF EMPLOYMENT/CAREER OPPORTUNITIES

Completing the course could be your first step towards an apprenticeship within the Carpentry & Joinery trades. Get a head start and have industry knowledge before you commence an apprenticeship.

PATHWAYS FROM THE QUALIFICATION

The course contains generic core units such as; work effectively and sustainably in the construction industry; apply OHS requirements; workplace communication; conduct onsite work place learning and more. These generic units can also be relevant to other trade focused areas.

COST/FEE PAYMENT OPTIONS

The course is delivered over two years at \$1500 per year, per student. A deposit of \$500 will be required to secure a place. Payment options are available.



Site	Fees	Resource fees	Course duration	Days of week	RTO	WPL hours required
ECC	\$1,500	Included	1 day / week over 2 years (plus WPL)	Thursday	Skill Hire WA	School to cover insurance. Student/school to organise work placement. WPL is a TP requirement and must be in the construction industry.



CERTIFICATE II BUILDING & CONSTRUCTION PAINTING PATHWAY 52824WA



COURSE DESCRIPTION

Provides practical skills and insight into the painting and decorating trades. This program offers students the chance to learn part of a first year apprenticeship in Painting without having to be employed as an Apprentice. Students are offered both classroom learning, hands on skills in our simulated work environment and on the job experience as part of their Work placement.

PRE-REQUISITES

Minimum completion Year 10, resume and application form, basic aptitude test (English and Maths), interview, Australian citizen or permanent resident, good attitude.

WHY CHOOSE THIS COURSE

Remain enrolled in your current school, whilst completing Year 11 or 12. Attend training one day per week in the Trade Training Centre under the direction of MPA Skills trainers and complete one day per week work experience with a qualified tradesperson. Uniform and safety equipment supplied. MPA Skills will provide assistance to schools for sourcing a Registered Painter for work related activities (find Host Employers for work experience).

EXAMPLES OF EMPLOYMENT/CAREER OPPORTUNITIES

Business owner or Sub-Contractor, Manager/Supervisor/Leading Hand,
Trainer or Field Officer, Licensed Trade.

PATHWAYS FROM THE QUALIFICATION

Pathway to an apprenticeship in the painting and decorating trades. Full-time indentured apprenticeship.

COST/FEE PAYMENT OPTIONS

\$1,500.00 non-refundable deposit paid in advance of commencement followed by ten equal weekly payments of \$150.00 per week from week 2 of the program payable by direct debit to MPA Skills.

Site	Fees	Resource fees	Course duration	Days of week	RTO	WPL hours required
ECC	\$3,000	Uniform & PPE provided free of charge subject to funding by Construction Training Fund	2 days / week over 3 terms (includes WPL)	Monday and Tuesday	MPA Skills	110 hours. Schools to cover insurance. School/student to organise work placement. WPL is a TP requirement and must be completed with a qualified tradesman.

CERTIFICATE II DATA AND VOICE COMMUNICATIONS

UEE20711

COURSE DESCRIPTION

This qualification provides competencies to select, assemble, set up and maintain simple equipment and systems to a prescribed routine of telecommunication cabling in buildings and premises. It includes the off-the-job requirements for Open Cabler registration.

PRE-REQUISITES

There are no pre-requisites for this course however students must complete a minimum of 360 hours of cabling experience to apply for Open Cable registration. 80 hours of this is required as part of the course.

WHY CHOOSE THIS COURSE

Graduates will be eligible to register with one or more Cabler Registrars for recognition as an ACMA Open Cabler. Students who have completed Certificate II in Electrotechnology can apply to complete the gap units to receive a dual qualification.

EXAMPLES OF EMPLOYMENT/CAREER OPPORTUNITIES

As a Data and Voice Communications Cabler you would select, assemble, set up and maintain simple equipment and systems to a prescribed routine of telecommunication cabling in buildings and premises. Work includes ACMA requirements for Open Cabler Registration.

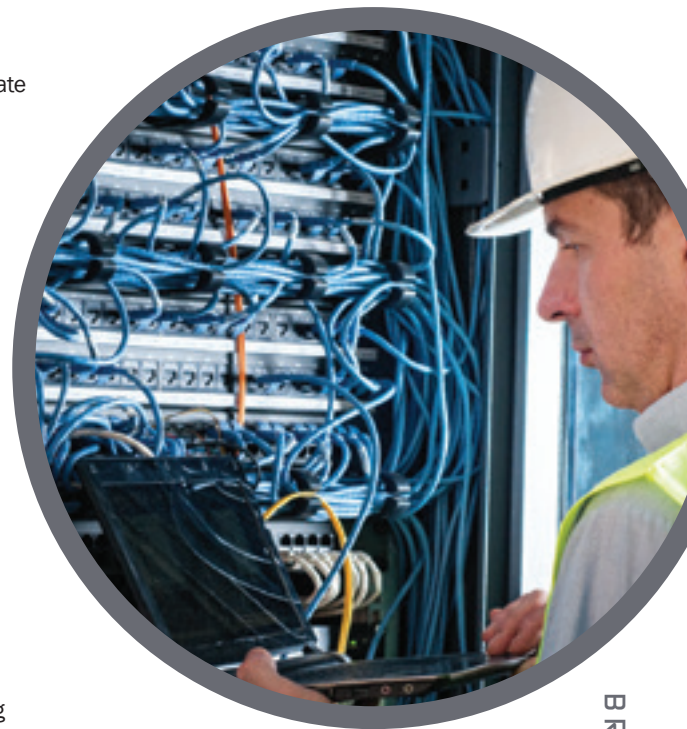
PATHWAYS FROM THE QUALIFICATION

As well as open employment as a data and voice communications cabler, further studies could include;

- Certificate II Electrotechnology Career Start Trainee
- Certificate III Electrician - Cabling
- Certificate III Electronics and Communications Tradesperson
- Certificate III Telecommunications Technician - Data and Voice
- Certificate IV Communications Technician
- Certificate IV Electronics Equipment Technician (Communications)
- Diploma in Technical Officer - Electronics and Communications Engineering
- Advanced Diploma, Senior Technical Officer – Electronics Technology

COST/FEE PAYMENT OPTIONS

Payment options and plans are available.



Site	Fees	Resource fees	Course duration	Days of week	RTO	WPL hours required
ECC	\$3000	Included	2 days / week over 3 terms	Thursday and Friday plus 2 x 1 week blocks	College of Electrical Training	80 WPL hours required; Schools to cover insurance. Student/school to organise work placement.



CERTIFICATE II ELECTROTECHNOLOGY (CAREER START) UEE22011

COURSE DESCRIPTION

The qualification is designed to provide participants with industry specific training to gain skills, knowledge and behaviours to enable transition into an indentured apprenticeship in the Electrotechnology Industry.

PRE-REQUISITES

All applicants are required to undertake a literacy and numeracy pre-selection test administered by the College. The test is specific to transposition of formula, trigonometric ratio and algebra.

WHY CHOOSE THIS COURSE

The qualification covers competencies fulfilling the requirements of a work entry program and provides grounding in safety, opportunity to develop high level individual and team communication skills and the undertaking of work placement.

EXAMPLES OF EMPLOYMENT/CAREER OPPORTUNITIES

Electrotechnology and Telecommunications.

PATHWAYS FROM THE QUALIFICATION

Pre-apprenticeship course or indentured apprenticeship in Electrotechnology field. Certificate III Electrotechnology (Apprenticeship)

COST/FEE PAYMENT OPTIONS

Payment options and plans are available.



Site	Fees	Resource fees	Course duration	Days of week	RTO	WPL hours required
ECC	\$3600	Included	2 days / week over 1 year (includes WPL)	Thursday and Friday	College of Electrical Training	200 hours. Schools to cover insurance. School/student to organise work placement. WPL is a TP requirement and must be completed with a registered Electrical Contractor.

CERTIFICATE II SKILLS FOR WORK AND VOCATIONAL PATHWAYS FSK20113

COURSE DESCRIPTION

This nationally endorsed qualification is designed for students who require further foundation skills development to prepare for workforce entry or vocational training pathways. It is suited to learners who need;

- Reading, writing, numeracy, oral communication and learning skills at ACSF Level 3; and/or
- Entry level digital literacy and employment skills; and/or
- A vocational training and employment plan

PRE-REQUISITES

There are no pre-requisites for this course.

WHY CHOOSE THIS COURSE

The course is suited to students who aspire to work in a trade related industry and has been designed to include some elective units that relate specifically to the Electrotechnology industry. Successful completion of this course guarantees graduates of a place in the Certificate II Electrotechnology Pre-Apprenticeship at the Bunbury Regional Trade Training Centre.

EXAMPLES OF EMPLOYMENT/CAREER OPPORTUNITIES

Entry level employment in a range of industry areas. Completion of this course meets the minimum requirements to enter an apprenticeship (not just electrical!).

PATHWAYS FROM THE QUALIFICATION

Students can continue to study through a Pre-Apprenticeship or gain full time employment in a variety of industry areas or an Apprenticeship.

COST/FEE PAYMENT OPTIONS

Payment options and plans are available.



Site	Fees	Resource fees	Course duration	Days of week	RTO	WPL hours required
ECC	\$2000	Included	1 day / week over 3 terms	TBC	College of Electrical Training	No required work place hours but highly recommended to complete as many as possible. Schools to cover insurance. Student/school to organise work placement.

